



**InterCafe 2008**  
Print Manager Manual

### **InterCafe 2008**

This manual and the appendant software belong to blue image GmbH Germany and are subject to the appendant license agreements and copyright regulations.

© 2008 blue image GmbH  
Manual version of July 1, 2008.

### **Important Notice:**

The software is constantly being expanded and improved. Therefore it is possible that this manual is not yet showing all functions of the software. Please inform yourself about new version of our software on our homepage [www.blueimage.de](http://www.blueimage.de). The blue image GmbH Germany assumes no liability for the correctness of this documentation.

# Contents

<b>1</b>	<b>Installation of the Printer</b>	<b>4</b>
1.1	Local Printer at the Server . . . . .	4
1.2	Local Printer at the Client/Kiosk . . . . .	4
1.3	Network Printer . . . . .	5
<b>2</b>	<b>InterCafe Virtual Printer at the Client</b>	<b>6</b>
2.1	Installation of the Virtual Printer . . . . .	6
2.2	Print via Spooler . . . . .	7
2.3	Settings for PDF . . . . .	7
2.4	DPI Settings . . . . .	8
<b>3</b>	<b>Settings at the Server</b>	<b>9</b>
3.1	Prices . . . . .	9
<b>4</b>	<b>PrintServer</b>	<b>11</b>
4.1	Settings . . . . .	11
4.2	Print Overview . . . . .	11
4.3	PrintServer Logfile . . . . .	11
4.4	Service . . . . .	12
4.5	Service Management . . . . .	12
<b>5</b>	<b>FAQ - Frequently Asked Questions</b>	<b>13</b>

## Chapter 1

# Installation of the Printer

### 1.1 Local Printer at the Server

**Installation of the Printer** Connect the printer to the main computer (InterCafe Server) and install it as described in the manual provided by the manufacturer. It is possible to install more than one printer. To ensure the printer has been installed correctly, please print a test page.

**PrintServer** Check if the PrintServer has been installed at this computer in *Start* → *Programmes* → *InterCafe 2008*. Normally the installation of the PrintServer will automatically be done with the installation of the Server. The PrintServer has to be installed as service. More information concerning the PrintServer you will find in the manual under → *PrintServer*.

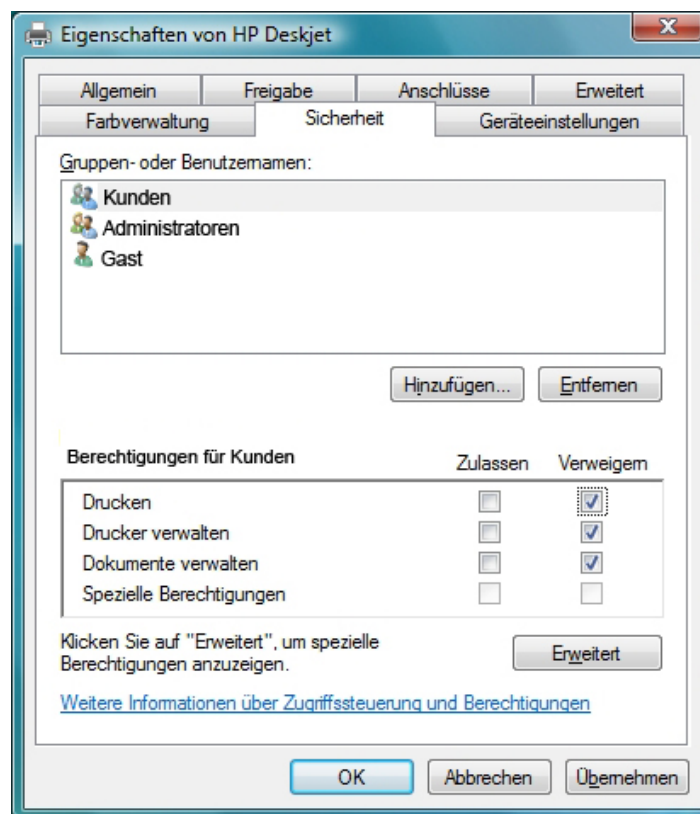
**Note:** The printers at the Server do not need to be enabled by Share Printer in Windows, as InterCafe 2008 contains an integrated PrintServer. The usage of printers is with the PrintServer not limited as would be the case in the Windows Share Printer, i.e. it allows you to print from various Clients at the same time.

### 1.2 Local Printer at the Client/Kiosk

**Install Printer** It is possible to install the printer your customers shall use at a Client computer. Install this printer as described in the manual provided by the manufacturer. It is possible to install more than one printer. To ensure the printer has been installed correctly, please print a test page.

**PrintServer** When you have connected the printer at a Client, you also need to install the *PrintServer* at this computer and have it start as service. Check if the PrintServer has been installed at the computer at *Start* → *Programmes* → *InterCafe 2008*. More information concerning the PrintServer you will find in this manual under → *PrintServer*.

**Prohibit Printing at the Local Printer** To stop customers printing for free at the local printer installed at the Client or Kiosk, you have to prohibit it in Windows Control Panel (Note: limited function in Windows XP Home). To do so go to *Start* → *Control Panel* → *Printer*. Make a right mouse click at the printer and select the option *Properties*.



Under the heading *Security* you select the Windows user. Set the options *Print*, *Manage Printer* and *Manage Documents* to *Refuse*. Confirm the new setting with *OK*. The user can then print at the Virtual Printer only. InterCafe PrintServer runs as service and thus has the necessary rights for printing.

### 1.3 Network Printer

**Install Printer** Install the network printer as described in the manual provided by the manufacturer. It is possible to install more than one network printer. To ensure the printer has been installed correctly, please print a test page.

**PrintServer** When using one or more network printers, the PrintServer must be installed at the computer where the network printer has been installed (best at the Server). More information concerning the PrintServer you will find in this manual under → *PrintServer*.

## Chapter 2

# InterCafe Virtual Printer at the Client

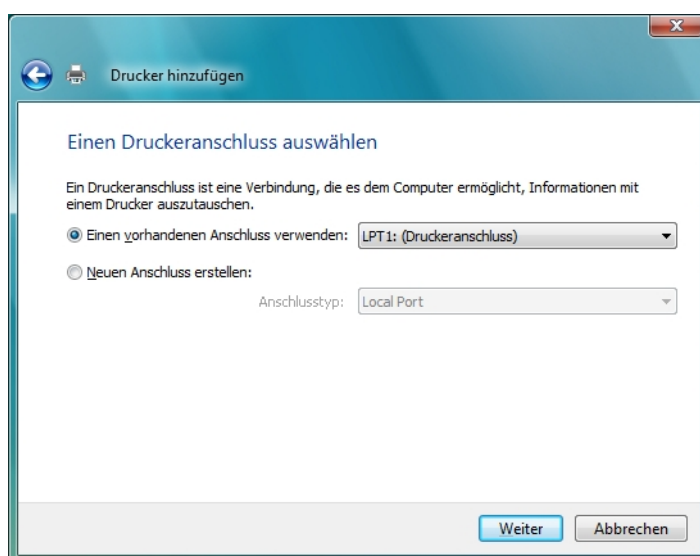
The Print Manager of the InterCafe software makes use of a virtual printer (InterCafe Virtual Printer) you have to install at the Clients. Please ensure that at the Client computers only the InterCafe Virtual Printer has been installed and **no other printers**, so that customers cannot print for free at a different printer.

### 2.1 Installation of the Virtual Printer

Please install the Virtual Printer at the Client computers. Do the following:

At the Client go to *Start* → *Control Panel* → *Printer* and click on *Add Printer*. In the *Printer Installation Wizard* select the option *Local Printer*. Please ensure that under Windows XP the option *Find and install Plug and Play Printer automatically* has **not** been ticked.

**Connection of the Printer** Select *Add new connection* and choose *Local Port* to be the type of connection. As connection name, enter e.g. *local Port*.



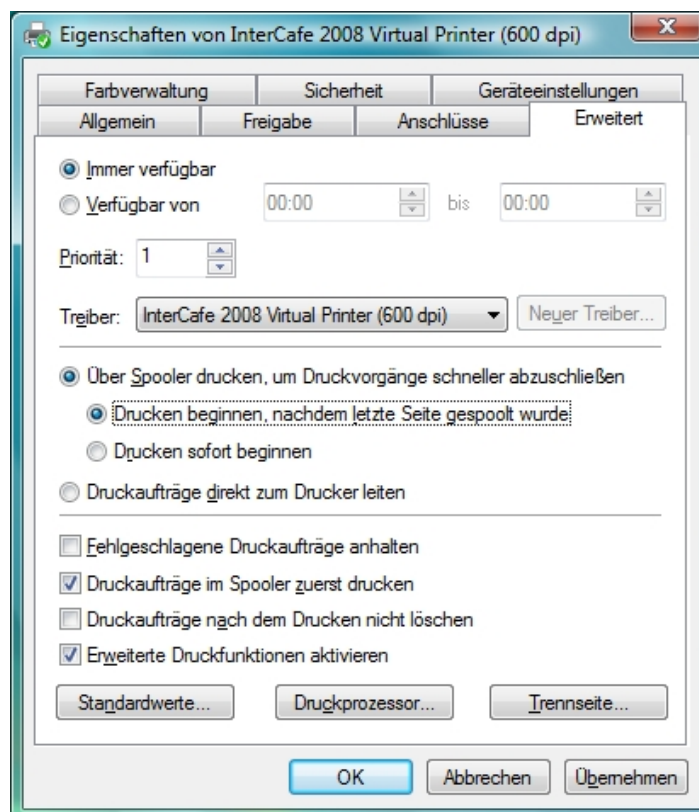
**Select Print Driver** In the Printer Selection, please click at the button *data carrier* and then on *Search*. The Print Driver for the InterCafe Virtual Printer you will find in the *InterCafe Client* programme directory:

e.g. C:\Programmes\InterCafe2008\Client\PrinterDriver

Select this and then click on *OK*. Now the InterCafe Virtual Printer should appear in the list. Click on *Next*, to complete the installation.

## 2.2 Print via Spooler

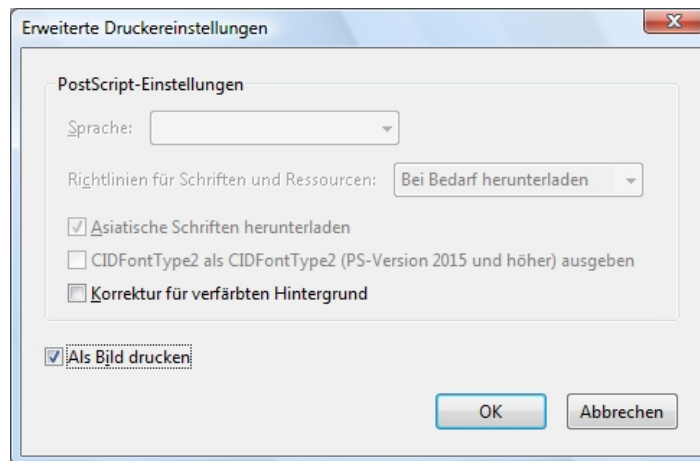
After the installation of the Virtual Printer go to *Start* → *Control Panel* → *Printer*. Make a right mouse click at the Virtual Printer and select the option *Properties*.



Go to *Extended* and activate the option *Start printing after the last page has been spooled*, so that longer documents are being printed as a whole.

## 2.3 Settings for PDF

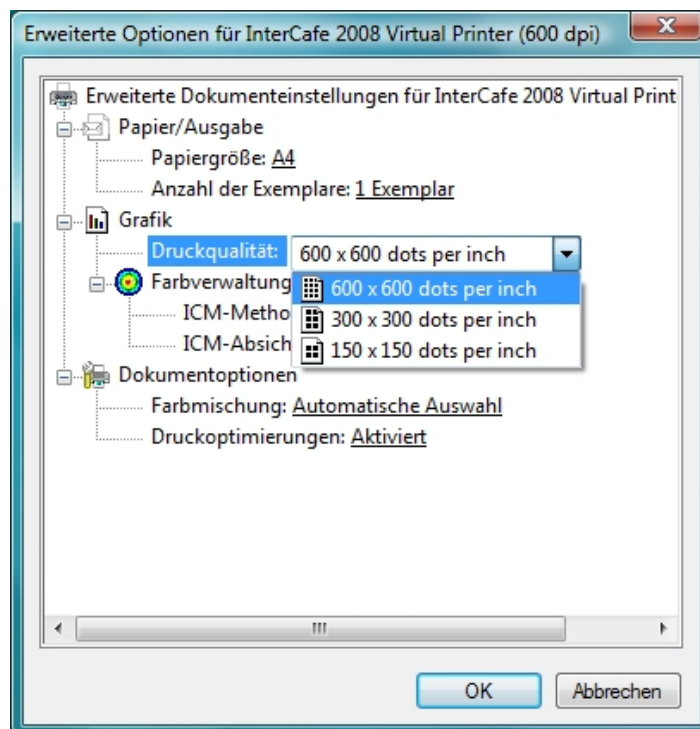
You have to make the following amendments to the PDF-Reader (e.g. Acrobat Reader) at the Clients in order for PDF documents to be printed and invoiced correctly through the Virtual Printer.



Open any document with the PDF-Reader and click on *Print*. In the print window click on *Extended* in order to view the extended printer settings. There, activate the option *Print as picture* and confirm the change with *OK*. You should make this amendment at all Clients.

## 2.4 DPI Settings

With the DPI settings in the Virtual Printer you can control the quality and the speed of a print. The standard DPI setting is 300. If you feel that the duration for a print is too long, you can adjust the DPI as following.

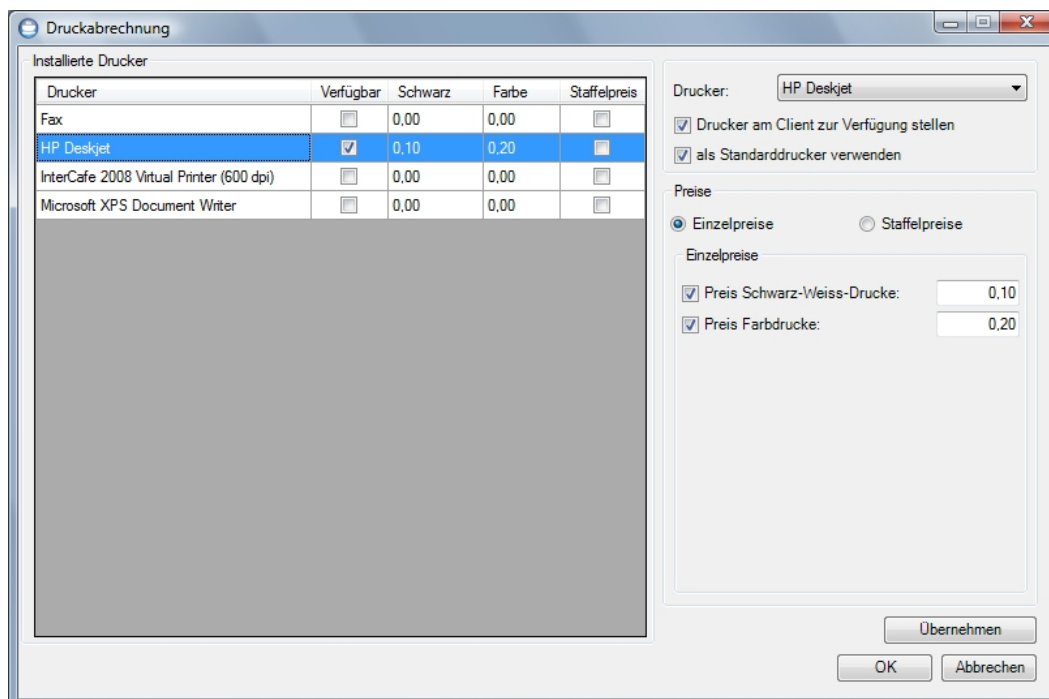


Go to *Control Panel* → *Printer* and access the settings of the Virtual Printer by making a right mouse click on the Virtual Printer. Click on *Advanced* in the main window and select in *Graphics* → *Print quality* the DPI setting you wish to use. The lower the DPI the faster the print and the higher the DPI the higher the quality.

## Chapter 3

# Settings at the Server

In InterCafe 2008 it is possible to invoice the printing at multiple printers. Under *Settings* → *Prices* → *Computer* → *Print Manager* you can define the prices used by the Print Manager.



Select a printer. The function *Display printer at the Client* must be activated for the printer to appear to the customer using the Client. If this printer shall be the standard printer for all Clients, activate the function *Use as standard printer*.

Only those printers will be displayed at the Client that are set to be *Available* here.

**Note:** The Virtual Printer must *not* be set to be available!

### 3.1 Prices

You can choose between individual prices and scale prices in invoicing.

**Individual Prices** When selecting the option *Individual Prices*, you can enter the price per page for black-and-white as well as colour prints.

**Scale Prices** When selecting the option *Scale Prices*, you can invoice according to the quantity of printed pages (e.g. cheaper prices for bigger quantities). Enter the quantity (e.g. 1-10, 11-50, 51-100, 101-999). The last scale you should in any case set to reach up to 999.

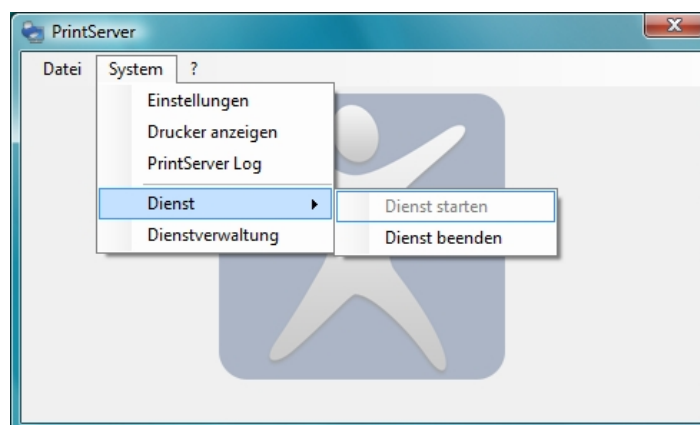
**Note:** You must *not* enter a price for the Virtual Printer!

## Chapter 4

# PrintServer

The InterCafe PrintServer is being installed automatically with the Server installation. It runs as a Windows service and is being started automatically with every start of the PC.

The configuration of the InterCafe PrintServer is possible by going to *Start* → *Programmes* → *InterCafe 2008* → *PrintServer* or by using the TrayIcon pf the Windows task bar next to the displayed time.



### 4.1 Settings

If the PrintServer is *not* installed at the same PC as the service, you must here enter the IP-address of the machine the service is installed at.

### 4.2 Print Overview

In the overview you will see all printers that are installed at the PC which contains the PrintServer. You also see if it is a colour or black-and-white printer.

### 4.3 PrintServer Logfile

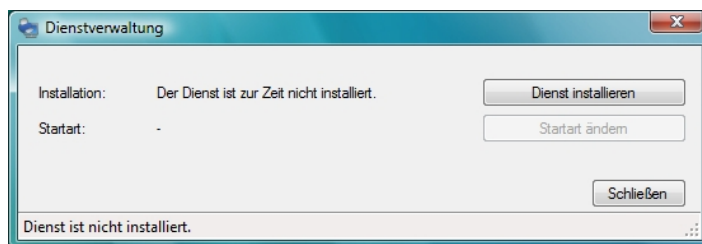
The PrintServer Logfile shows you all activities of the PrintServer in chronological order (e.g. prints, connections etc.).

## 4.4 Service

To start and end the service of the programme, you must click in the PrintServer on *System* → *Service* → *Start Service* or *End service*. Normally the service will be started automatically when starting the PC, therefore you do not need to do it by hand.

## 4.5 Service Management

To open the Service Management of the PrintServer, click on *System* → *Service Management*.



Usually the service of the PrintServer is already being installed and started with the installation of the PrintServer. Should this for some reason not be the case, you can install the service here. To do this, click on *Install Service* and select the start mode *automatic*. The service is then being started automatically when starting the PC.

## Chapter 5

# FAQ - Frequently Asked Questions

### **No Print Preview appears at the Client**

In the Control Panel at the Client-PC, make a right mouse click at the Virtual Printer and select the option *Properties*. Under *Erweitert* check if the print processor is set to *ICPrint-Processor*. Usually this setting will be made automatically by the software. If necessary, please make the setting by hand.

### **No printers appear in the Print Preview**

Please check whether a price for the printer has been entered in the Print Manager at the Server and whether the PrintServer runs as service.

### **Only the first pages of large documents are being printed, the rest is missing**

Go to *Start* → *Control Panel* → *Printer* at the PC where the printer has been installed. Make a right mouse click at the Virtual Printer and select the option *Properties*. Go to *Extended* and activate the option *Start printing after the last page has been spooled*, so that longer documents are being printed in full length.

### **No PDF documents can be printed**

Open any document in the PDF reader at the Client and click on *Print*. In the print preview click on *Extended* so that you can view the extended print options. Activate the function *Print as Picture* und confirm the change with *OK*. You should make this change to the settings once at each Client.

### **Customers can print for free with the Kiosk Version**

To keep the customers from printing for free at the local printer, you need to prohibit this in your Windows settings (Note: under Windows XP only partially possible). To do so, go to *Start* → *Control Panel* → *Printer*. Make a right mouse click at the printer and select the option *Properties*. Select the Windows User under *Security*. Switch the options *Print*, *Manage Printers* and *Manage Documents* to *Prohibit*. Confirm the new settings with *OK*. The user can only print at the Virtual Printer now.