



**InterCafe 2010**  
Manual for DKS Recovery Software

### **InterCafe 2010**

This manual and the appendant software belong to blue image GmbH Germany and are subject to the appendant license agreements and copyright regulations.

© 2009 blue image GmbH  
Manual version of October 31, 2009.

### **Important Notice:**

The software is constantly being expanded and improved. Therefor it is possible that this manual is not yet showing all functions of the software. Please inform yourself about new versions of the manual on our homepage [www.blueimage.de](http://www.blueimage.de). The blue image GmbH Germany assumes no liability for the correctness of this documentation.

# Contents

<b>1</b>	<b>Installation</b>	<b>4</b>
1.1	General . . . . .	4
1.2	Install DKS . . . . .	4
1.2.1	Installation from the Internet . . . . .	4
1.2.2	Installation from CD . . . . .	4
1.2.3	Perform the Installation . . . . .	4
1.3	Uninstall DKS . . . . .	5
<b>2</b>	<b>Configuration</b>	<b>6</b>
2.1	Define DKS Password . . . . .	6
2.2	Define Mode . . . . .	6
2.3	Special Features . . . . .	7
2.3.1	Use of Several Partitions . . . . .	7
2.3.2	Virtual Drive (VDisk) . . . . .	7
2.3.3	Block Removable Mediums . . . . .	9
2.4	Change Language . . . . .	9
<b>3</b>	<b>Activating DKS at the Client</b>	<b>10</b>
3.1	Status . . . . .	10
3.2	Activating the Protection . . . . .	10
3.3	Deactivating the Protection . . . . .	10
<b>4</b>	<b>Activating DKS via the DKS Manager</b>	<b>11</b>
4.1	Entering the DKS Passwords . . . . .	11
4.2	DKS Manager . . . . .	11
4.2.1	Status . . . . .	11
4.2.2	Activate Protection . . . . .	11
4.2.3	Deactivate Protection . . . . .	12
<b>5</b>	<b>Registration</b>	<b>13</b>

## Chapter 1

# Installation

### 1.1 General

DKS Recovery Software is a software solution that protects your system software, installed programmes, system settings and desktop settings from undesired manipulations and computer viruses. By restarting the computer, it will be reset to the original condition including all former programmes and settings.

**Requirement:** The offer is only valid in connection with an InterCafe 2004 or InterCafe 2010 licence.

### 1.2 Install DKS

In order to install the DKS software, you must be logged in as administrator in Windows. The software has to be installed at the computers used by the customers only (Clients). Before installation, please remove all programmes with a similar recovery function, as otherwise technical problems may occur.

#### 1.2.1 Installation from the Internet

Download the DKS software from the website [www.internetcafe-software.de](http://www.internetcafe-software.de) under the section *DKS Recovery*. Start the installation process of the DKS software by starting the `DriveSetup.exe`.

**Notice:** For the installation of the software on other computers, you should save the downloaded files into a shared folder or burn the files on a CD. This way you avoid having to download the files again from the internet.

#### 1.2.2 Installation from CD

If you have the DKS software on CD, put the CD into the CD-ROM drive. In *My Computer*, open the CD-drive and start the file `DriveSetup.exe` for installation.

#### 1.2.3 Perform the Installation

After you have started the installation, the *Installation Wizard* may ask to restart Windows. This is because the Wizard was not installed on your system before or as an older version only.



After having started the installation, the welcome message of the installation will be displayed in a new window. Please click on the button *Next*. **Please take your time to read the licence agreement.** If you agree with the conditions, select the option *I accept the licence agreement* and afterwards click on *Next*. **If you do not agree, you must cancel the setup at this point.** Confirm the installation by clicking *Next*. At the end of the installation process the computer has to be restarted.

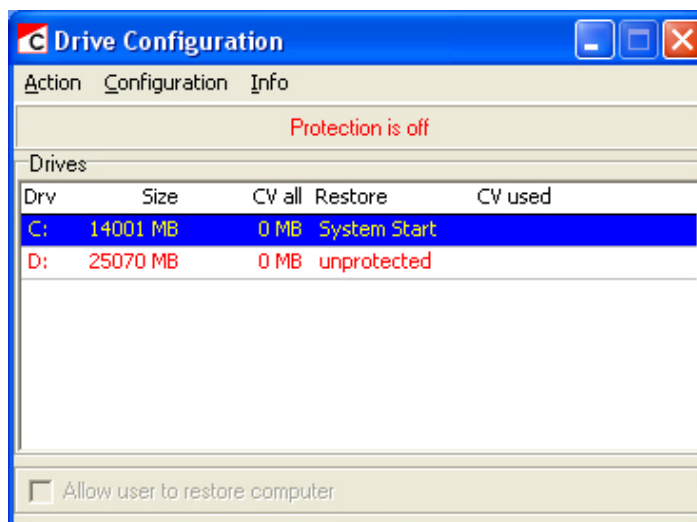
### 1.3 Uninstall DKS

If you do not wish to register the software, please uninstall the DKS software *during* the trial period, as the uninstalling will be more difficult after the trial period has ended. In order to uninstall the DKS software, you have to be logged in as administrator in Windows. Deactivate the DKS protection and uninstall the programme using the system control.

## Chapter 2

# Configuration

Start the *configuration* of the DKS software in the start menu in → *Programmes* → *DKS* → *Drive*.



### 2.1 Define DKS Password

Go to *Configuration* → *Settings*. In *Passwords* click on *Change* to change the Admin password. Enter the desired password (max. 8 characters, no special characters) and confirm it. It is important to set a password so that unauthorised persons cannot switch off the protection. If you are using the DKS Manager at the Server, note down the password and the specific Client so that you can enter the information later in the DKS Manager at the Server.

### 2.2 Define Mode

You can define the mode of the recovery by double clicking on the partition in the overview. With internet terminals the mode *System Start* is used as standard for the recovery. This means that with every restart of the computer all changes that have been made are being reset to the original condition. The original condition is the condition the computer was in at the moment the protection was activated.

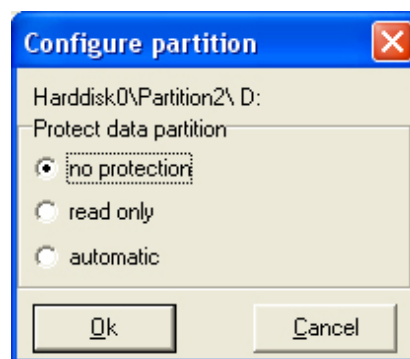
## 2.3 Special Features

In addition to the possibility of protecting the computer completely, the DKS software also offers some special features. These are especially of interest if for example with kiosk terminals some parts of the computer (partitions) shall not be protected, so that data can be saved permanently (e.g. statistics for the InterCafe software).

### 2.3.1 Use of Several Partitions

If you have several partitions on your computer, they will be displayed here. This is useful for example if you are using the InterCafe software on a kiosk terminal. You then have to install InterCafe on a partition of the computer that will not be reset, as otherwise important data like settings and statistics of the InterCafe software will be lost with every restart of the computer. If you only have one partition, you can also create a virtual drive for InterCafe (see *VDisk*).

Define the mode for the first position as usual (see *Defining the Mode*). For the other partitions, you can define the following options for each partition by double clicking on the partition:



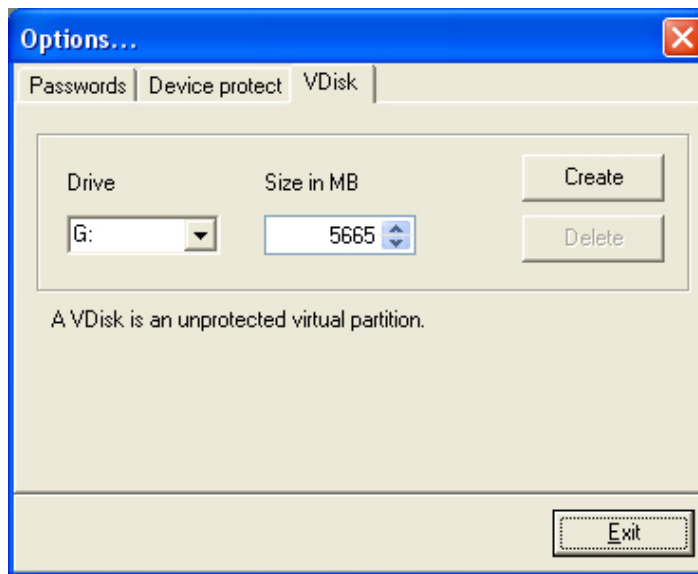
**No Protection** Select this option, if you do not want to protect the partition.

**Read Only** Select this option, if one shall only be permitted to read from this drive (Write Protection).

**Automatic** If you select this option, the user has both read and write access. The changes will be deleted however with every restart (Mode: System Start).

### 2.3.2 Virtual Drive (VDisk)

VDisk is an unprotected *virtual* drive that you can create yourself. To do so, click on *Configuration* → *Settings*.



### Create Virtual Drive

In the index *VDisk* you can define the name (the letters already used by Windows for other drives will be hidden) and the size of the virtual drive. Define the size of the drive so it leaves enough memory on the C:-drive for a correct functioning of Windows. As size you should select a maximum of 10-20% of the free memory for the virtual drive. Click on *Create* to start the process.

### Formatting the Virtual Drive

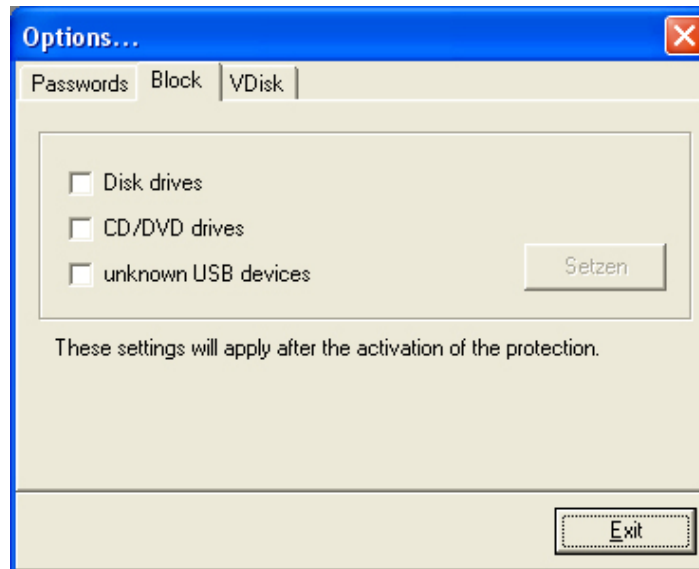
After the restart, the virtual drive will be displayed in Windows in the Windows Explorer. If you click on the new drive, you will be asked to format the data carrier. Start the process with *Yes*. On this drive, install programmes that shall not be reset and therefore exclude this drive from the protection. The virtual drive however is not a partition that really exists. If you have the possibility to create a real Windows partition, you should prefer this.

### Delete Virtual Drive

The virtual drive can be deleted in the configuration of the DKS software in settings under *VDisk* by clicking on the *Delete* button. Before deleting the VDisk, save all data you have saved on the virtual drive, as the data will otherwise be lost.

### 2.3.3 Block Removable Mediums

If in addition you wish to block drives for external removable mediums, click on *Configuration* → *Settings*.



In the index *Block* you can block floppy drives, CD/DVD drives and unknown USB devices. To activate the blocking, you must activate this option and click on *Apply*. The settings will be activated when activating the protection. Unknown USB devices are all devices that were not connected to the PC while activating the protection.

**Unblock drive temporarily** To unblock a drive temporarily (e.g. for some admin work or for a specific customer), you can leave the protection activated and only deactivate the specific drive and then click on *Apply*. With the next restart, the drive will be blocked again.

**Unblock drive permanently** To unblock the drive permanently, deactivate the DKS software, deactivate the drive and click on *Apply* in order to save the new settings.

## 2.4 Change Language

To change the language, access the configuration by clicking on the Start Menu and then click on *Configuration* → *Language*.

## Chapter 3

# Activating DKS at the Client

### 3.1 Status

After the installation and restarting Windows, a red and white tray icon will be displayed next to the windows time. If the protection is deactivated, a black exclamation mark is flashing in the icon. The status bar in the configuration will display that the protection is switched off.

If the protection is activated, you will see a large **S** for *Safety switched on* in the red and white tray icon and in the status bar will display that the protection is switched on.

### 3.2 Activating the Protection

In order to activate the protection, start the *Configuration* in the start menu in → *Programmes* → *DKS* → *Drive*. Click on *Action* and then on *Activate Protection*. Alternatively you can also click in the overview with a right mouse click onto the specific partition and activate the protection. The computer then needs to be restarted so that the settings will be applied.

### 3.3 Deactivating the Protection

To deactivate the protection, start the *Configuration* in the start menu in → *Programmes* → *DKS* → *Drive*. Enter the DKS password. Click on *Action* and then on *Deactivate Protection*. Alternatively you can also click in the overview with a right mouse click on the specific partition and switch off the protection. The computer then needs to be restarted so that the settings will be saved.

## Chapter 4

# Activating DKS via the DKS Manager

With the special module DKS Manager, you can activate and deactivate the DKS software at the Clients from the Server. To do so, you must enter the passwords of the DKS software in the DKS Manager.

### 4.1 Entering the DKS Passwords

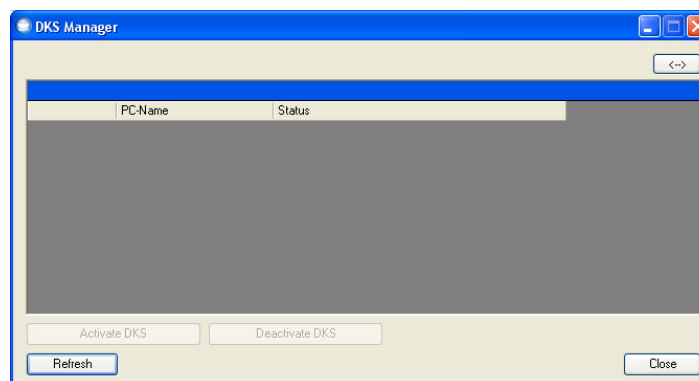
Select a Client in the computer overview at the Server and make a right click on this Client. Go to *Settings* and enter the password that you have defined in the DKS software for this specific Client. This is necessary for the activation and deactivation of the protection through InterCafe 2010.

### 4.2 DKS Manager

If you have registered the special module *DKS Manager* for the InterCafe 2010 software, start the DKS Manager via *Settings* → *Special Modules* → *DKS Manager*.

#### 4.2.1 Status

In the DKS Manager you see all the Clients and the status of the DKS software of every single Client, e.g. whether the DKS software is activated or deactivated, or whether the connection to the computer is established at all.



#### 4.2.2 Activate Protection

Select the desired Clients in the DKS Manager (tick the box) and click on the button *Activate DKS*. The protection can only be activated on Clients on which the DKS software has been

installed and where the password has been entered in the InterCafe software.

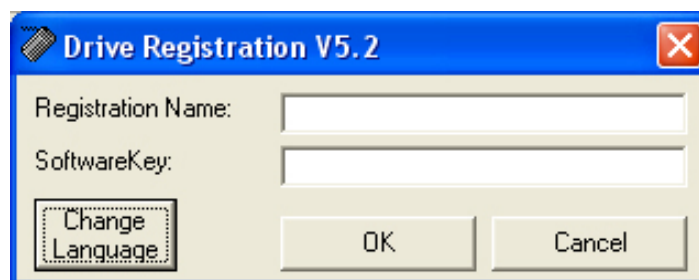
### **4.2.3 Deactivate Protection**

Select the desired Clients in the DKS Manager (tick the box) and click on the button *Deactivate DKS*. The protection can only be deactivated on Clients on which the DKS software has been installed and activated.

## Chapter 5

# Registration

To register the software you need to have a registration key. To purchase the licence, please contact your distributor or blue image GmbH directly. After you have received the registration name and the registration key, go to the start menu and click on *Programmes* → *DKS* → *DRIVE* → *Registration*.



To enter the registration data the computer must be connected to the internet. After you have entered the data, click on *OK*. You will receive a confirmation that the software has been registered successfully.

**Hinweis:** You have to register the programme at every single computer where the DKS software has been installed.